

# CONFERENCES & EVENTS FACT SHEET



WAURN PONDS ESTATE

CONFERENCES | EVENTS | ACCOMMODATION

# WELCOME



Waurn Ponds Estate is a boutique conference, events and accommodation venue nestled amongst expansive grounds on the doorstep of the Great Ocean Road.

Our purpose-built centre offers eight meeting spaces with state-of-the-art technology, 60 modern accommodation rooms, a range of event venues, break out spaces and on-site catering, making it the ultimate venue for conferences and business events.

Located only 20 minutes from the Geelong CBD and just over an hour to Melbourne, the Estate provides an escape from the hustle and bustle.

While you're here, enjoy a delicious lunch, relax by our infinity pool and spa, play a game of tennis, work out in the gym or take a stroll along one of our spectacular walking tracks.

# CONFERENCES



The Estate is Geelong's premiere conference centre, boasting state of the art technology, serene views and eight conference spaces. The conference rooms can accommodate anywhere from 2 people for a meeting, up to 154 delegates theatre style.

The Estate's AV equipment is tailored to provide a seamless user experience and enhance your conference. Along with the cutting-edge amenities provided, your meeting or conference can be fully supported by our campus IT specialists who are available to hire.

There are a range of breakout areas available, and the design of the Estate allows small groups to find a quiet place to collaborate, reflect and plan.

Our in-house conference catering menus will nourish and sustain you, while our one-touch espresso machines keep the quality coffee flowing throughout the day.

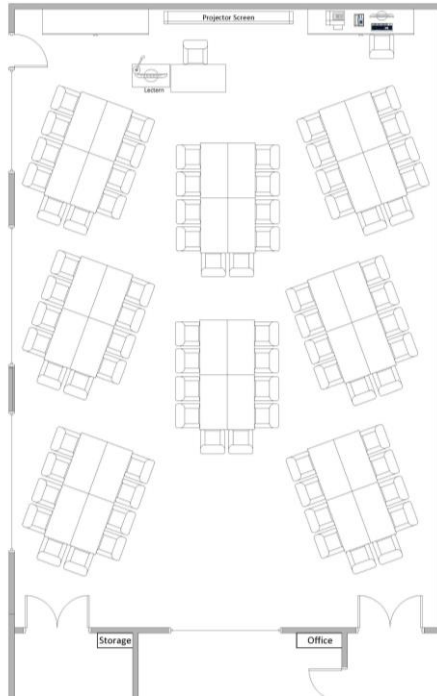
## CONFERENCE SPACES

### CAPACITY CHART

	AREA M <sup>2</sup>	CABARET	BOARDROOM	THEATRE	U-SHAPE	CLASSROOM
TORQUAY	198	80	26	154	34	48
ANGLESEA	90	30	16	60	22	24
BELLBRAE	37		10			
CERES	37		10			
DUNED	56		16			
JAN JUC	37				12	
MORIAC	37				12	
PARAPARAP	62				18	

The Estate boasts eight technology-rich conference and meeting spaces, the largest of which can accommodate up to 154 guests. Find out more about our conference spaces [here](#).

# CONFERENCE SPACES



## TORQUAY

Our largest conference room, Torquay features endless views, high ceilings, access to our Lawn and the latest AV technology.



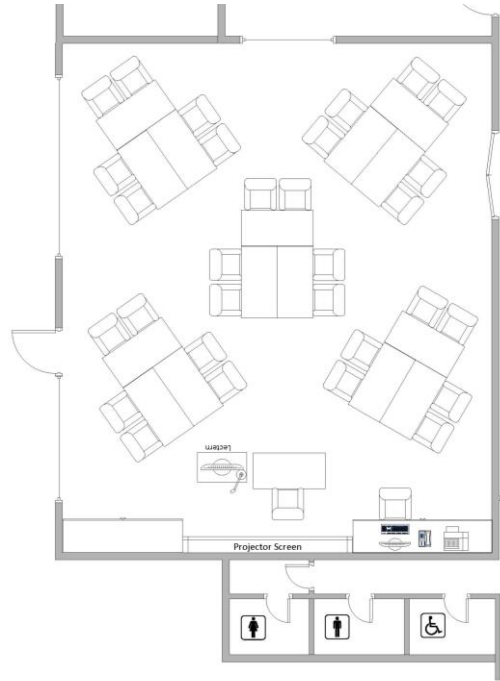
## Capacity

Cabaret: 80  
Boardroom: 26  
Theatre: 154  
U Shape: 34  
Classroom: 48

## Technology

Data projector and screen, with fold back screen for presenter's view  
Built in cameras at front and rear of room  
Connectivity to your personal laptop  
Lectern with microphone and touch panel operation  
2 x handheld microphones  
2 x lapel microphones  
8 x table microphones  
Wi-fi  
Hearing loop device

# CONFERENCE SPACES



## ANGLESEA

Our second largest conference room, Anglesea is full of natural light with high ceilings, access to a terrace and the latest AV technology.



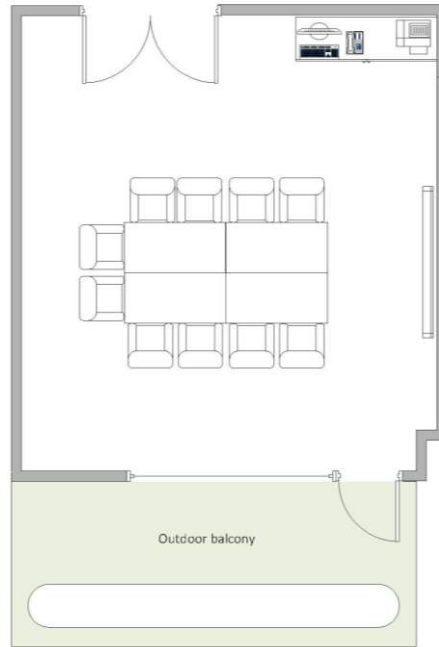
## Capacity

Cabaret: 30  
Boardroom: 16  
Theatre: 60  
U Shape: 22  
Classroom: 24

## Technology

Data projector and screen  
Built in cameras at front and rear of room  
Connectivity to your personal laptop  
Lectern with microphone and touch panel operation  
2 x handheld microphones  
2 x lapel microphones  
Wi-fi  
Hearing loop device

# CONFERENCE SPACES



## BELLBRAE

A smaller boardroom, Bellbrae features views through floor to ceiling windows, access to a private balcony and the latest AV technology.



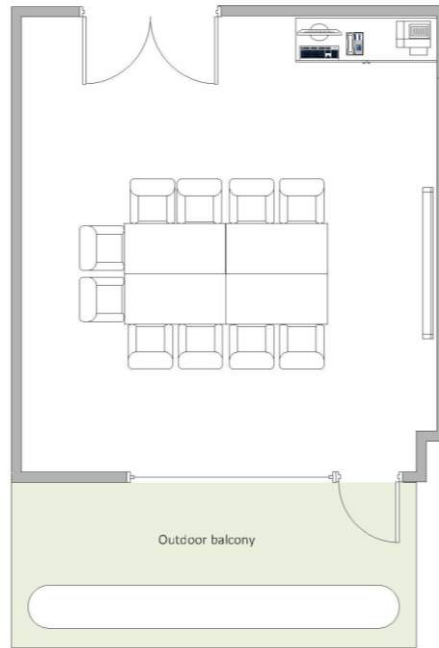
## Capacity

Boardroom: 10

## Technology

Data projector and screen  
Touch panel operation  
Connectivity to your personal laptop  
Built in camera and microphone for online meetings  
Wi-fi

## CONFERENCE SPACES



### CERES

A smaller boardroom, Ceres features views through floor to ceiling windows, access to a private balcony and the latest AV technology.



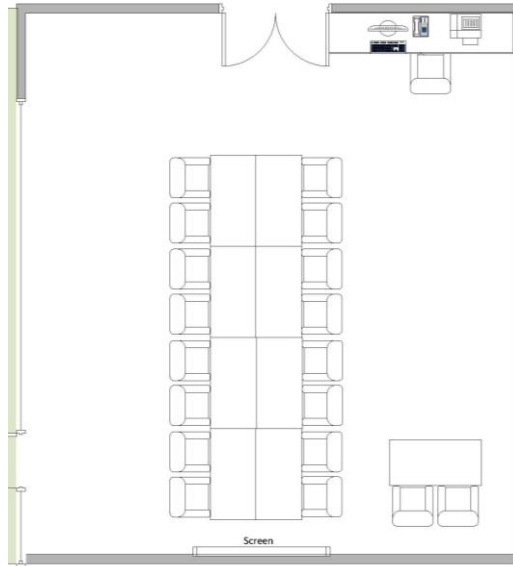
### Capacity

Boardroom: 10

### Technology

Data projector and screen  
Touch panel operation  
Connectivity to your personal laptop  
Built in camera and microphone for online meetings  
Wi-fi

# CONFERENCE SPACES



## DUNEED

One of our mid-sized conference rooms, Duneed features lake views through floor to ceiling windows, access to a private balcony and the latest AV technology.



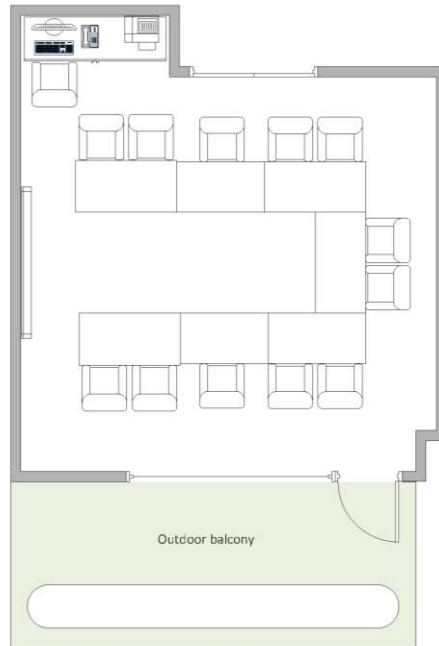
## Capacity

Boardroom: 16

## Technology

Data projector and screen  
Touch panel operation  
Connectivity to your personal laptop  
Built in camera and microphone for online meetings  
Wi-fi

# CONFERENCE SPACES



## JAN JUC

A smaller boardroom, Jan Juc features views through floor to ceiling windows, access to a private balcony and the latest AV technology.



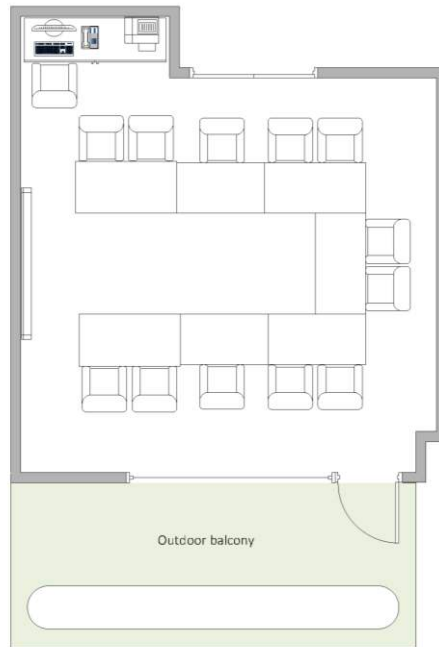
## Capacity

U Shape: 16

## Technology

Data projector and screen  
Touch panel operation  
Connectivity to your personal laptop  
Built in camera and microphone for online meetings  
Wi-fi

# CONFERENCE SPACES



## MORIAC

A smaller boardroom, Moriac features views through floor to ceiling windows, access to a private balcony and the latest AV technology.



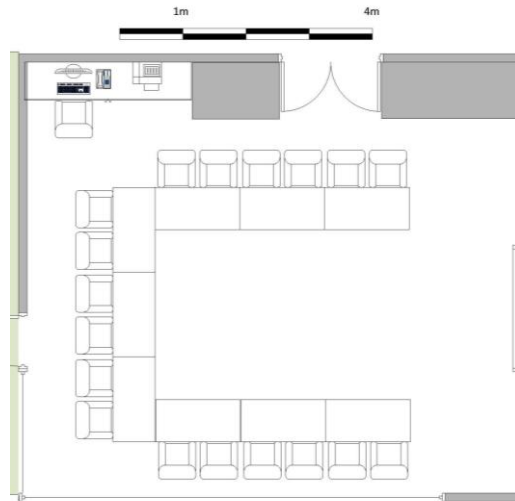
## Capacity

U Shape: 12

## Technology

Data projector and screen  
Touch panel operation  
Connectivity to your personal laptop  
Built in camera and microphone for online meetings  
Wi-fi

# CONFERENCE SPACES



## PARAPARAP

One of our mid-sized conference rooms, Paraparap features lake views through floor to ceiling windows, access to a private balcony and the latest AV technology.

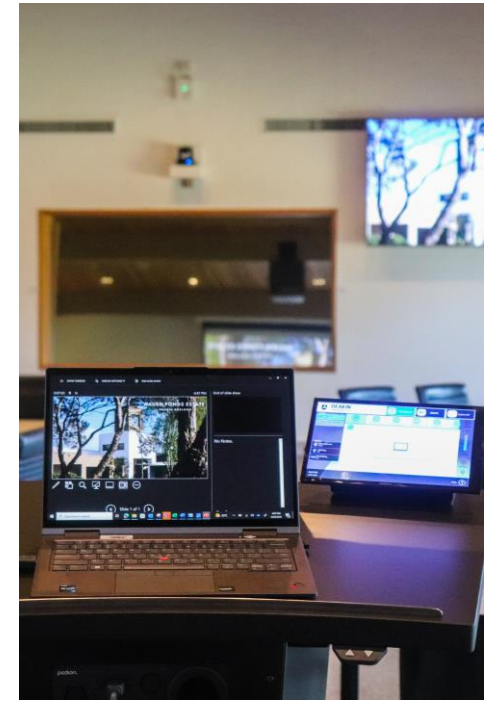
### Capacity

U Shape: 18

### Technology

Data projector and screen  
Touch panel operation  
Connectivity to your personal laptop  
Built in camera and microphone for online meetings  
Wi-fi

# TECHNOLOGY



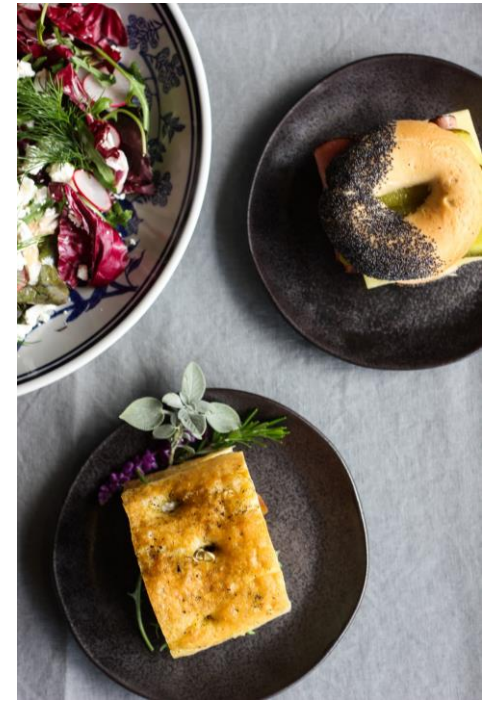
The Estate's audio visual (AV) equipment is tailored to provide a seamless user experience and enhance your conference.

Our meeting rooms feature one-touch operation, allowing you to plug your laptop directly into our extra-large screens.

Cameras are built in both at the front and rear of the rooms for ease of Zoom meetings, and recording capabilities and hearing loop devices are available.

Along with the cutting-edge technology provided, your conference can be supported by our campus IT specialists, available to hire.

## CONFERENCE CATERING



Our conference menus will nourish and sustain you throughout the day.

Exciting and flavourful food is part of what we do at the Estate. Our dishes are created using seasonal ingredients and produce from our kitchen garden.

Our menus promote interaction between delegates, either via our Premium package lunch, served grazing style, or our Deluxe package lunch, served seated.

Great coffee is essential, and our packages all feature one-touch espresso coffee and Love Tea available all day.

Find out more about our conference catering and view packages [here](#).

## EVENTS



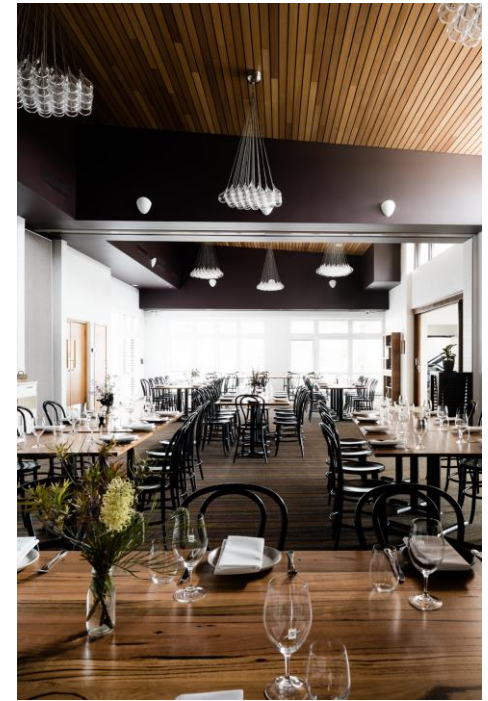
The Estate has a range of venues to suit any occasion. Our Barrabool space can cater for up to 100 guests seated or 150 cocktail, while our gorgeous Bistro is perfect for smaller events. The Kitchen Garden, Lawn, Pool Terrace and our expansive Lounge are also all available for event bookings.

The Waurin Ponds Estate team can assist you with any event, including tea breaks, sit down banquets, cocktail parties, grazing stations and of course, conferences.

Our unique indoor and outdoor event spaces are suited to corporate events, private events and celebrations.

Find out more about our event spaces [here](#).

## EVENT SPACES



### THE BARRABOOL SPACE

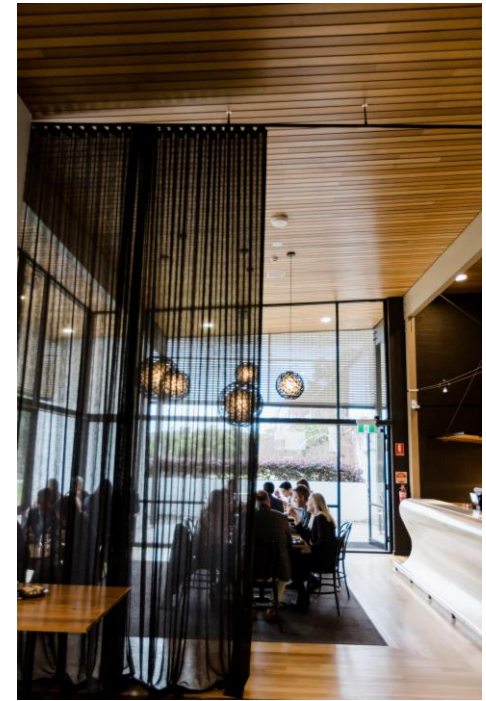
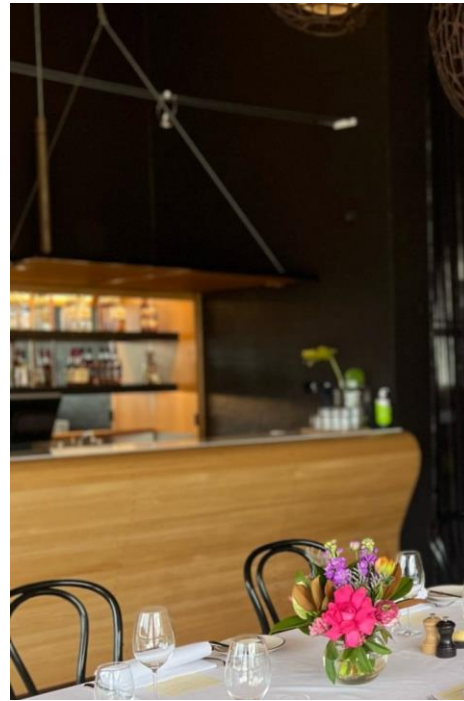
Our stunning Barrabool space is our largest event venue and leads out to the Kitchen Garden.

#### Capacity

Cocktail: 150

Banquet: 100

## EVENT SPACES



### THE BISTRO

Flooded with natural light through floor to ceiling windows, our Bistro features our bar and leads out to its own terrace.

### Capacity

Cocktail: 30

Banquet: 16

## EVENT SPACES



### THE LOUNGE

Spread across three levels, our Lounge has a variety of zones and is perfect for large events.

### Capacity

Cocktail: 250

## EVENT SPACES



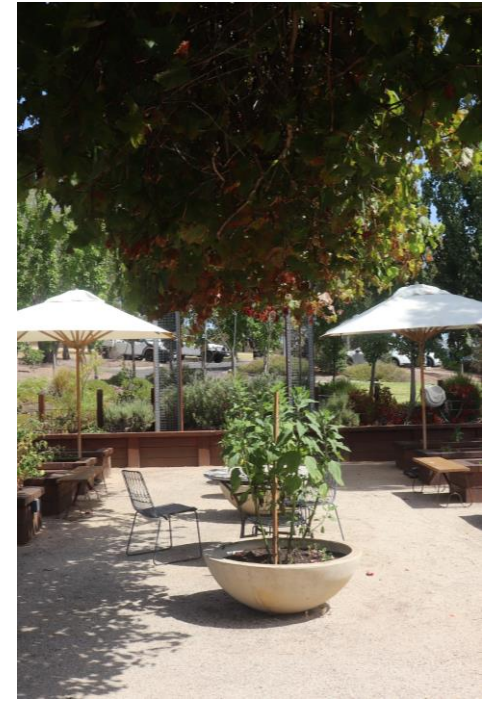
### THE LAWN

Our sprawling green Lawn with vast Estate views is ideal for large celebrations.

### Capacity

Cocktail: 300

# EVENT SPACES



## THE KITCHEN GARDEN

The Kitchen Garden, hidden amongst the vines, is the perfect spot for welcome drinks or a morning or afternoon tea.

### Capacity

Cocktail: 120

## EVENT SPACES



### THE POOL TERRACE

Overlooking our infinity pool and spa, the Pool Terrace is perfect for small events in warm weather.

#### **Capacity**

Cocktail: 30

Banquet: 20

## EVENT CATERING

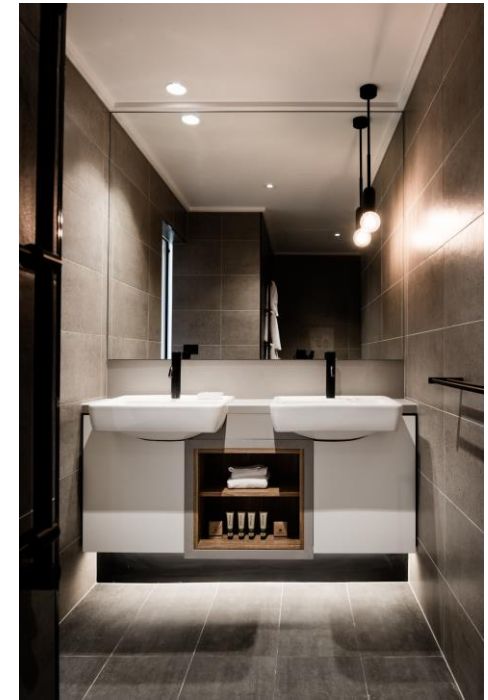


We are catering and event specialists. Our talented chefs have created event menus that go beyond traditional expectations. Using seasonal ingredients, our dishes showcase the best of what the region has to offer.

We can assist with all types of menus and events, including cocktail menus with substantial and bowl items, as well as packages for sit down banquets including different options for serving styles and dessert. Or maybe you'd like to hold an al fresco event with grazing tables or food stations — anything is possible at the Estate.

Find out more about our catering options and view packages [here](#).

## ACCOMMODATION



Immerse yourself in the comfort of the Estate's exceptional accommodation.

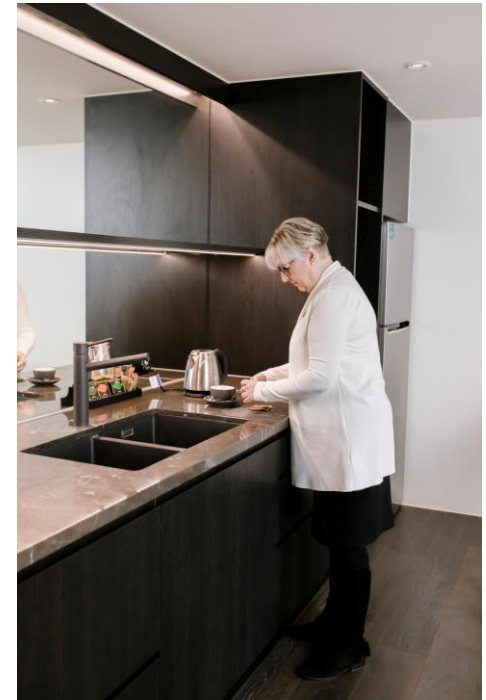
We offer 60 elegantly appointed rooms, each featuring modern ensuites, spacious king-size beds and stunning views. Rooms all include crisp white bed linen, tea and coffee making facilities, mini fridge, TV, a desk and luxury body products.

Our room options include spacious suites, standard rooms and accessible rooms. Twin share is also available.

Breakfast is available at the Estate every day and can be added to your room booking.

Find out more about our accommodation rooms [here](#).

## ACCOMMODATION



### SUITE

Our suites offer breathtaking views of the lakes from both the bedroom and lounge.

With a king size bed, large double ensuite, kitchenette, sitting area, wardrobe, TV and luxury products, they include everything you need.

Breakfast can be added to your booking.

We have two suites available

## ACCOMMODATION



### STANDARD & STANDARD PLUS ROOMS

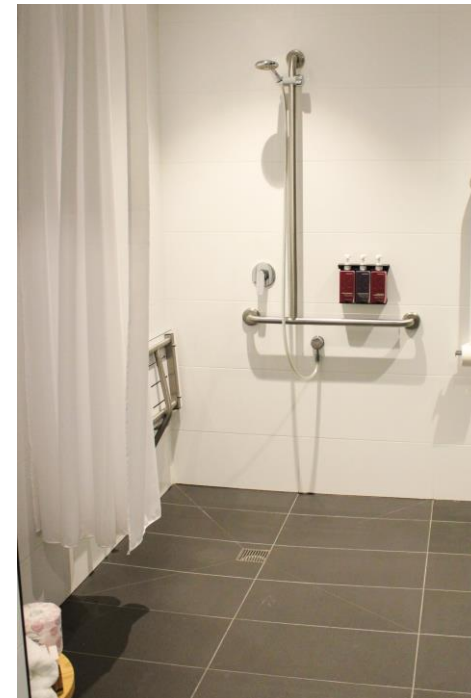
Both our Standard and Standard Plus rooms feature a king size bed, modern ensuite, desk, TV, tea and coffee making facilities and luxury products.

The rooms have lovely views of the Estate grounds, gardens or pool. The Standard Plus Room is slightly larger than the Standard Room.  
Twin share is available.

Breakfast can be added to your booking.

We have 55 standard / standard plus rooms available.

## ACCOMMODATION



### ACCESSIBLE ROOMS

The Estate offers accessible rooms, all on the ground floor featuring garden views.

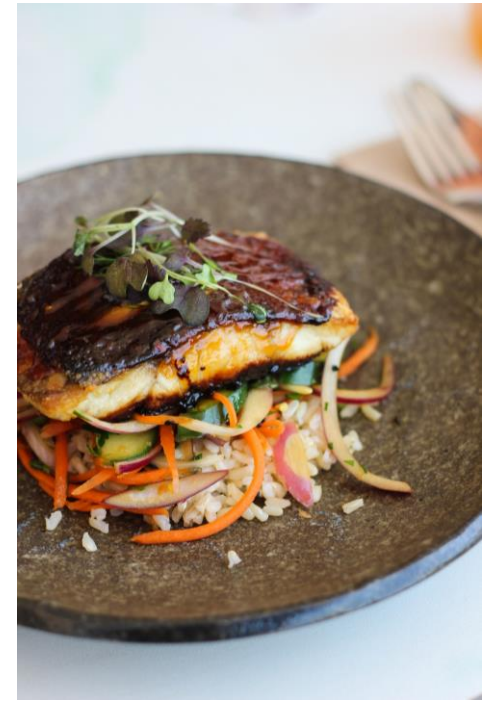
The rooms have spacious accessible ensembles, tea and coffee making facilities, a desk, TV and luxury products.

Two of our accessible rooms have king size beds which can be twinned, while the third has a queen size bed.

Breakfast can be added to your booking.

We have three accessible rooms available.

## ACCOMMODATION CATERING



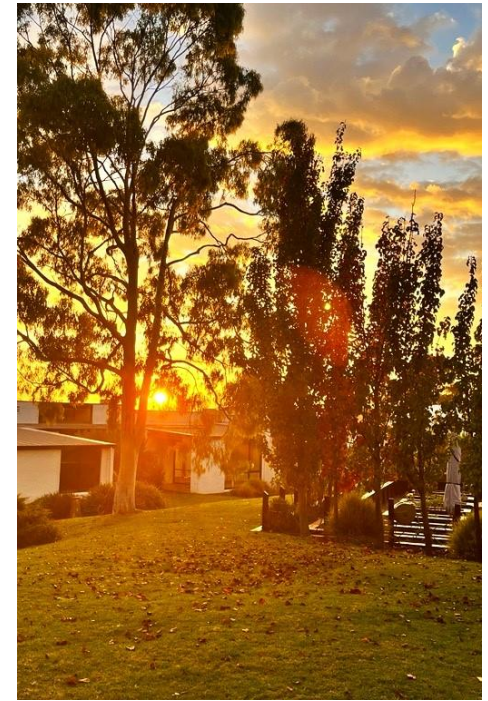
We have a range of delicious catering options if you're here at the Estate.

Staying with us? Add breakfast onto your booking. Served grazing style in our Barrabool space seven days a week.

Enjoy a glass of local wine in our stunning bar while staying in and sampling our Express Dining Menu. Available from 11.00am – 7.00pm Monday to Friday, it is perfect if you'd like to enjoy a quick lunch on the pool terrace or relaxed dinner in our bar, lounge or in your room. Views our Express Dining menu [here](#).

We also have a range of platters and hampers we can deliver to your room. Our hampers also make a great gift – find out more [here](#).

## AMENITIES



A tranquil, purpose built conference and accommodation centre in Geelong, the Estate has a range of facilities available for your convenience.

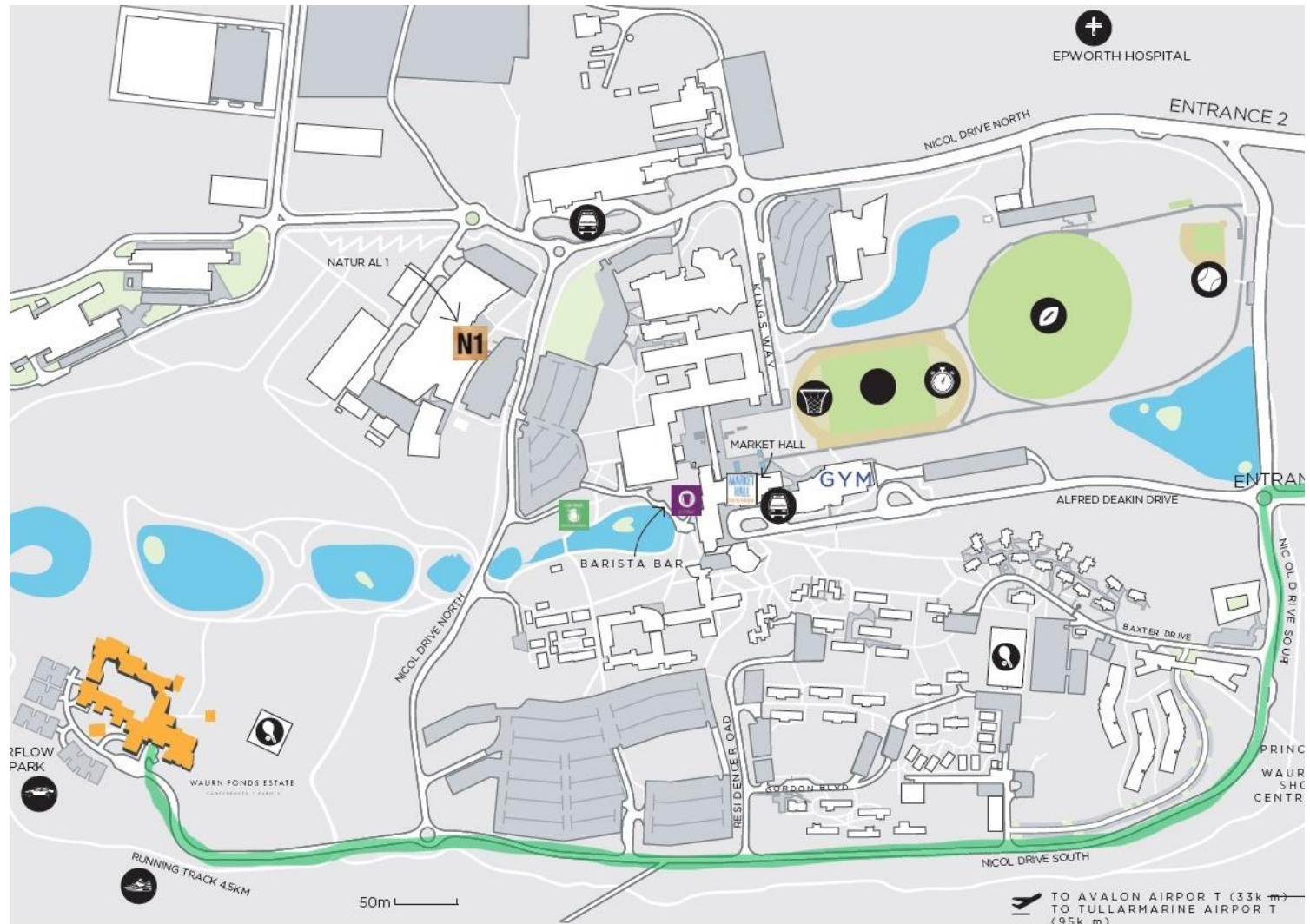
The beautiful, secluded, yet accessible environment will have you feeling rested and invigorated from the moment you enter our grounds.

Take a stroll along our 5km walking track, enjoy the swimming pool with heated spa, work out in the gym, shoot pool in the lounge or play a game of tennis on the courts.

Complimentary parking and free Wi-Fi are always included for your convenience.

Find out more about our facilities [here](#).

## FIND US



We are located on Deakin University's Waurn Ponds campus.  
From Pigdons Road, enter Alfred Deakin Drive (Entrance 1) and turn left onto Nicol Drive South. Follow this road and then turn right at our sign which says Waurn Ponds Estate.

CONTACT US



Waurnd Pond Estate  
Nicol Drive South, Waurnd Pond  
T 03 5227 3000  
E [waurndpondsestate@deakin.edu.au](mailto:waurndpondsestate@deakin.edu.au)  
W [waurndpondsestate.com.au](http://waurndpondsestate.com.au)